



Fordhook Avenue, W5

LONG LET. This two-bedroom property is situated in the heart of Ealing Common offering great living close to local transport links and amenities.

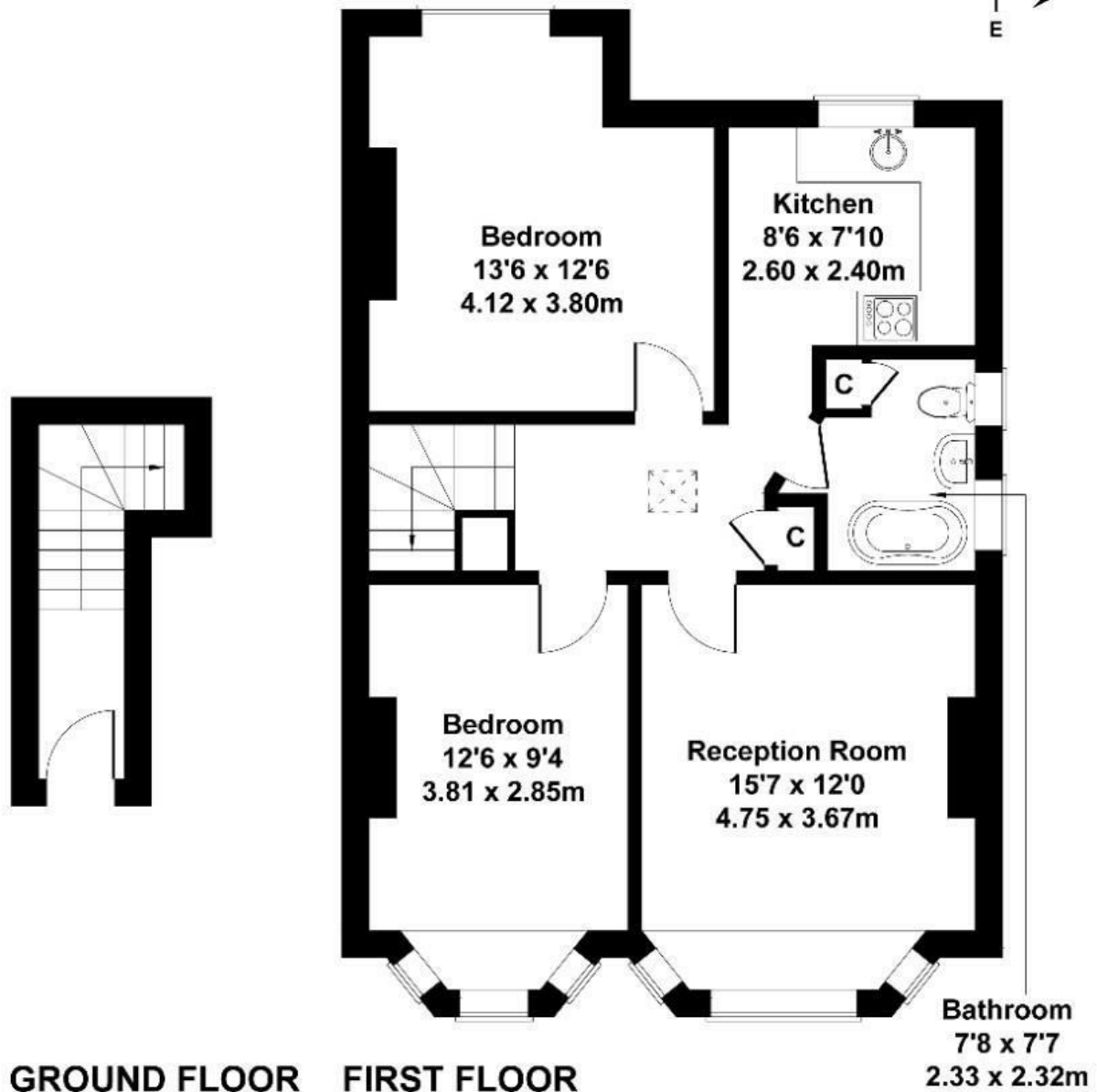
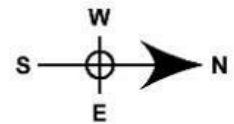
- Two double bedrooms
- Separate kitchen
- Great location
- Close to transport links
- Close to local amenities
- Managed by Go View

£2,200

Fordhook Avenue

Approximate Gross Internal Area

743 sq ft - 69 sq m



Not to Scale. Produced by The Plan Portal 2024
For Illustrative Purposes Only.

Energy Efficiency Rating		
	Current	Potential
Very energy efficient - lower running costs		
(92 plus) A		
(81-91) B		
(69-80) C		
(55-68) D		
(39-54) E		
(21-38) F		
(1-20) G		
Not energy efficient - higher running costs		
England & Wales		EU Directive 2002/91/EC